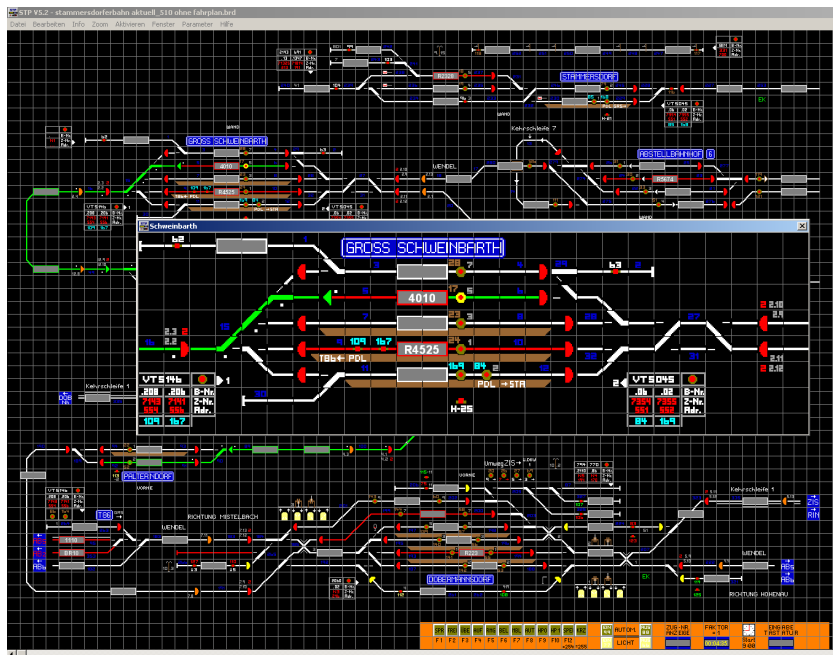


# STP - Prototypical Dispatching on Your PC

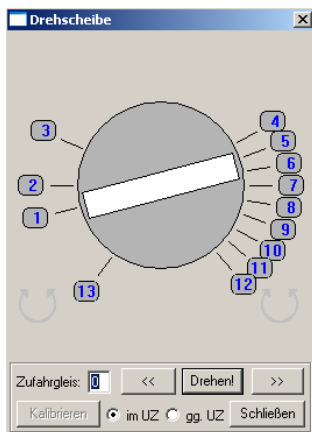
**New: Release V5.2 with many extensions and improvements!**

## Overview

- **Prototypical switchboard display** (routes lock-, route-lock indicator etc.)
- Different **panel types** (DrS, SpDrS, EStW)
- **Arbitrary design of switchboard elements** with built-in editor (4 sets included)
- **External dispatcher panel connectivity** via CAN bus for life-like operation
- **Networking** with up to nine PCs for operation of larger layouts
- **True (!) train number display** (using Zimo section modules) including stationary trains
- **Automatic layout state detection**, no manual entry of train positions required
- Versatile **Control possibilities** for layout operation incl. **Automation**



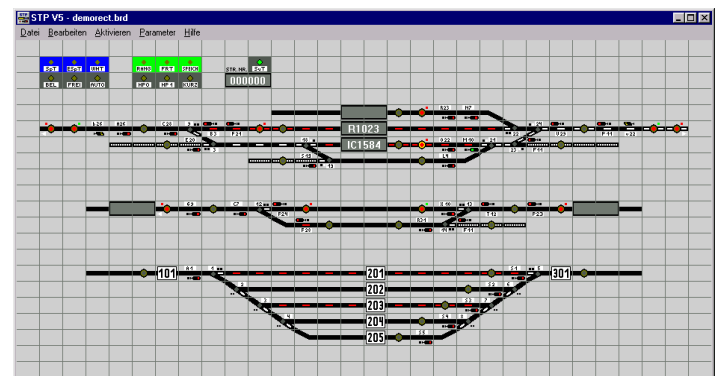
Dispatcher panel in EStW mode



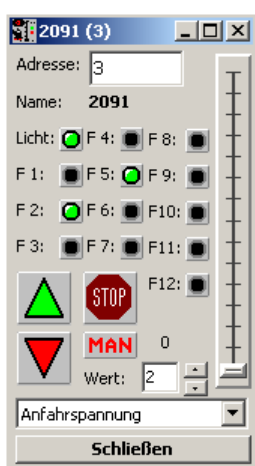
Turntable control

For layout control STP collaborates with the components of the Zimo digital system. Especially the use of the Zimo-specific **signal influenced train control** allows a track-section based control of manually as well as computer-operated trains and so provides a maximum of flexibility and security. This combination is suitable for small and large layouts and allows for combined manual and automatic operation without any restrictions!

Representation and operation of STP is based on real-world dispatcher panels. The display can span multiple monitors. Operation is also possible using (Windows compatible) tablet PCs featuring touch screens.



Dispatcher panel in SpDrS60 mode



Cab controller

## New Features in STP V5.2:

- Up to 9 **dispatcher panel windows**, optionally as "spyglass"
- Import of locomotive information from **ADaPT**
- Usage of **cab controllers** (requirement: **ADaPT**)
- Selective **sound output** to up to eight speakers
- **Counter variables** and conditions in routes
- Support for the **turntable modules** TT-DEC von LDT
- **Zimo MX10 support**, no additional **CAN adapter** required
- and much more...

## Prerequisites:

- Off-the-shelf PC with Pentium processor or better
- Available serial port (COM1 to COM15) or available USB-Port (depending on digital base unit)
- MS-Windows XP / Vista / Win 7 (32 & 64 bit)
- Zimo base unit MX1 with STP CANKey
- **New: Zimo MX10** base unit (direct USB connection)
- Turnout- and accessory decoders, Zimo accessory and track section modules depending on layout size



STP Software

**Dipl.-Ing. E. Sperrer Software**  
**Weissenberg 23, A-4053 Haid**  
**E-Mail: [info@stp-software.at](mailto:info@stp-software.at)**  
**Web: [www.stp-software.at](http://www.stp-software.at)**

Dipl.-Ing. E. Sperrer Software, Mail: [info@stp-software.at](mailto:info@stp-software.at), Web: [www.stp-software.at](http://www.stp-software.at)

Any modifications due to technical advancements reserved

Available in selected shops. More information: [www.stp-software.at!](http://www.stp-software.at!)

Suitable for

