

... Decoder Programming  
 ... Loco Database  
 ... Loco and Accessory Control  
 ... for Your Windows PC!

# ADaPT Rel. 3.1

Suitable for  Digital plus<sup>®</sup>  tams

The easy way to manage all your locomotives and DCC-compatible decoders.

ADaPT (Advanced Driving and Programming Tool) was developed to fully utilize the power of modern digital loco decoders. The program allows easy modification of all decoder registers (configuration variables or CVs) for many DCC compatible loco and accessory decoders without having to read complicated manufacturer documentation.

All information is permanently kept in a built-in database. Additionally, locos and accessory items (turnouts, signals) can be controlled using ADaPT's unique throttle and switch windows.



## The Database Module:

- Loco database (Access / Office compatible)
- Possibility of searching and browsing
- Easy copying of loco information to other engines
- Rollup windows for quick entry of loco type, manufacturer, road name etc.(adjustable ordering)
- Free enlargement / reduction of window size
- Management of collections / customer engines (same loco address may be used multiple times)
- Filtering, restriction to certain criterias (e.g. only Diesel engines of era III)
- Tabular engine selection list
- **New:** Additional info fields (decoder type, ...)



## The Programming Module:

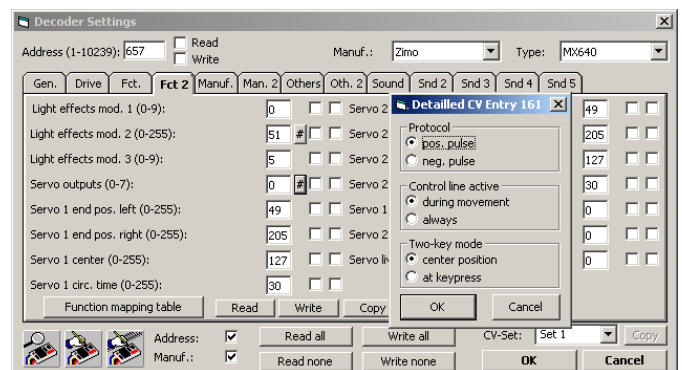
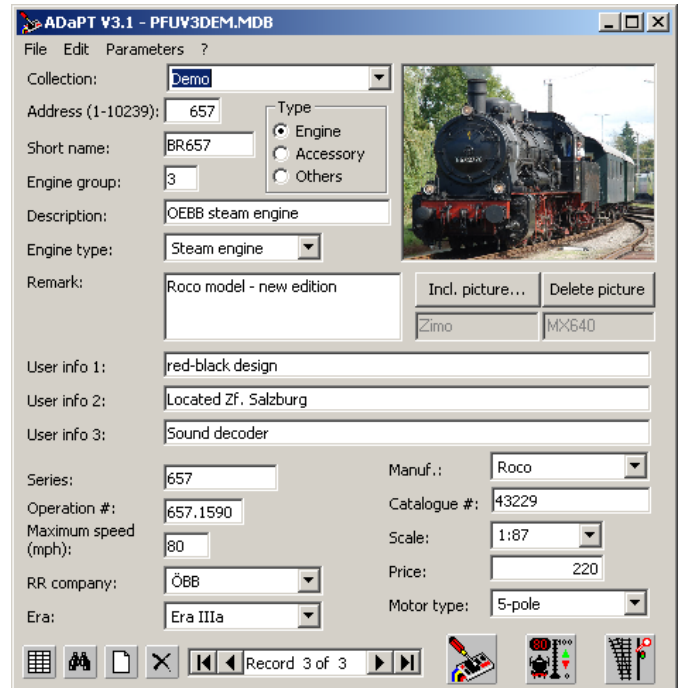
- Display, readout and programming of configuration variables (CVs), programming on main track
- Colored display of the current state of decoder settings (entered, programmed, ...)
- graphical entry of speed tables (speed curves)
- Manufacturer and decoder specific display of available configuration variables with ranges and help information, dialog window for bit coded variables
- Extensible manufacturer & decoder list (also via Internet), currently **over 300 decoder types!**
- Configuration variables up to CV 1024
- 5 CV "sets" per loco to store different operating scenarios (such as freight loco, shunting...)
- Simultaneous change of selected configuration variables in multiple locos.
- **New:** Extended function and sound fields
- **New:** Easy programming of decoders with indexed CV access (e.g. ESU LokSound V4)



## The Drive and the Accessory Module:

- Multiple concurrent throttles and switch windows
- Activation directly from the database window
- Immediate possibility to check new decoder settings
- Access to lights as well as 12 decoder function outputs
- Easy incremental change of decoder configuration variables in operation (for fine tuning)

Get your **FREE** test version from the internet NOW  
 ([www.stp-software.at](http://www.stp-software.at))!



## Prerequisites:

- Standard PC with Pentium processor or better
- a free serial port (COM1 to COM10) or a free USB Port (depending in DCC system used)
- Microsoft Windows ME / 2000 / XP / Vista, **Windows 7 (32 bit & 64 bit)**

## Supported central stations:

**Zimo central station** MX1, MX1/Mult, MX1/2000  
**New: Zimo MXULF** (USB)  
**Tams MasterControl** (USB)  
**Lenz central station** (V2/V3) with Lenz PC interface  
**New: Lenz Decoder Programmer** (USB)  
**Intellibox / TwinCenter** with serial connection



**Dipl.-Ing. E. Sperrer Software**  
**Weissenberg 23, A-4053 Haid**  
**E-Mail: [info@stp-software.at](mailto:info@stp-software.at)**  
**Web: [www.stp-software.at](http://www.stp-software.at)**

Dipl.-Ing. E. Sperrer Software, Mail: [info@stp-software.at](mailto:info@stp-software.at), Web: [www.stp-software.at](http://www.stp-software.at)

Any modifications due to technical advancements reserved